

TororoKONBU System

SHanko Ver4. 8. 0 Rel. 1

Install Guide

2012/03/31

TororoKONBU

e-Sea l

Table of contents

| | Page |
|---|------|
| 1. Introduction | 2 |
| 1-1. OS Requirement | 2 |
| 1-2. Han file and license | 2 |
| 2. Install | 4 |
| 2-1. Preparation of installation | 5 |
| 2-2. Install | 5 |
| 2-3. Install of Excel addin Macro for e-Seal menu | 7 |

This manual is the user's guide which described the installation method of TororoKonbu e-Seal "SHanko", and the operation method.

1. Introduction

This software is the software which seals documents electronically and settles accounts possible electronically on a PC.



By this software, a stamp object is embedded to document using technology called OLE. For example, although the function of insertion of an object is prepared for the word-processing software of OLE correspondence of a word, Ichitaro, etc., the object of the recognition mark can be embedded into a document using it.

However, in the case of sealing, you have to enter a password. By this password function, only those who know the password can seal no longer and electronic signature becomes possible. At the time of sealing, affiliation of an acknowledger name, a date, and an acknowledger, a recognition item (document number), etc. are embedded at an object. Moreover, since a recognition history is breathed out by the log file, recognition history management of a document is attained.

1-1. OS Requirement

This software operates on the following OS.

- ・ Windows7(x64) / 7(x86)
- ・ Windows Vista(x64) / Vista(x86)
- ・ WindowsXP

1-2. Han file and license

Using SHanko, the han file is needed. Print-of-a-seal image information is held at the han file. The sealing term is set to the print-of-a-seal file, and if it passes over this term, it becomes impossible moreover, to seal.

The **han** file is prepared 2100 family names. The list of **han** files should look at

<http://www.tororokonbu.jp/shanko/han/>

Enterprise license (for companies)

Han file conversion tool bmp2han. exe which can create a han file can be used for Enterprise License.

Moreover, the han file for 2100 family names without sealing term restrictions can also be used.

Personal License(for personal)

Although it is an individual-oriented license, it can also use in a company.

If you can purchase a personal license, I will send one han file.

Although there is no sealing term in the han file to send, it can't be changes on a user side.

| | Enterprise License | WorkGroupe License | Personal License |
|------------------------------|---------------------------------|--------------------|-----------------------------|
| HanFile Converter bmp2han | Available | Unavailable | |
| Han File | 2100 Han file(2100 Family Name) | | 1 Han file (1FamilyName) |

trial use

The han file for trial is prepared. Please download from the following URL.

<http://www.tororokonbu.jp/shanko/han/download.html>

Note) The sealing term is set to the han file.

For detail about the license,Please refer to the following URL.

http://www.tororokonbu.jp/hanko_price.html

Note) You can use this software for trial if you have no license.

2. Install

2-1. Preparation of installation

The file name is shanko****.zip, when download from on the Internet. Since it is a compressed file, please thaw. Defrosting Installer setup_***.exe is generated. Two or more installers may be thawed. Please choose a suitable installer.

| Installer | Explanation |
|-----------------|---|
| setup.exe | The usual installer. The installable module is as follows. 1.SHanko sealing tool (Shanko.exe) 2.SHanko management tool (SHanko manager (shankomgr.exe)) 3.The han file conversion tool for SHanko (bmp2han.exe) 4.Sealing log check tool (checklog.exe) 5.The sealing menu for Excel/Word |
| setup_nomgr.exe | The installer without a management tool. In order to maintain security, you may not want to give a management tool to the end user. The message under installation is Japanese / English auto select. Installation of those other than Japanese Windows can be performed now. The install module are as follows. 1.SHanko main part module (Shanko.exe) 2.The sealing menu for Excel/Word |

Please download the latest version of SHanko han file conversion tool bmp2han from the following site.

http://www.tororokonbu.jp/download_bmp2han.html

Note) SHanko Enterprise License is required to use the han file conversion tool bmp2han.

Note) When SHanko is already installed, please back up a SHanko index file (shnindex.dat), and a han file and a profile.

A setup wizard may overwrite these files.

Keep in mind that the registered recognition mark and profile will be deleted if overwritten.

Installation Step

1.Execution of an installer

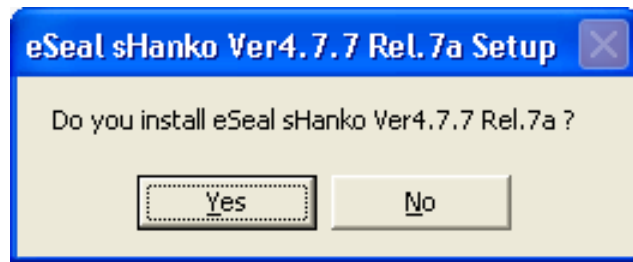
2.Inclusion of an Excel sealing menu add-in.

2-2. Install

Step1) Execute setup.exe .

Step2)

Because the message of the confirmation is displayed when the installer is started, click the button "Yes".

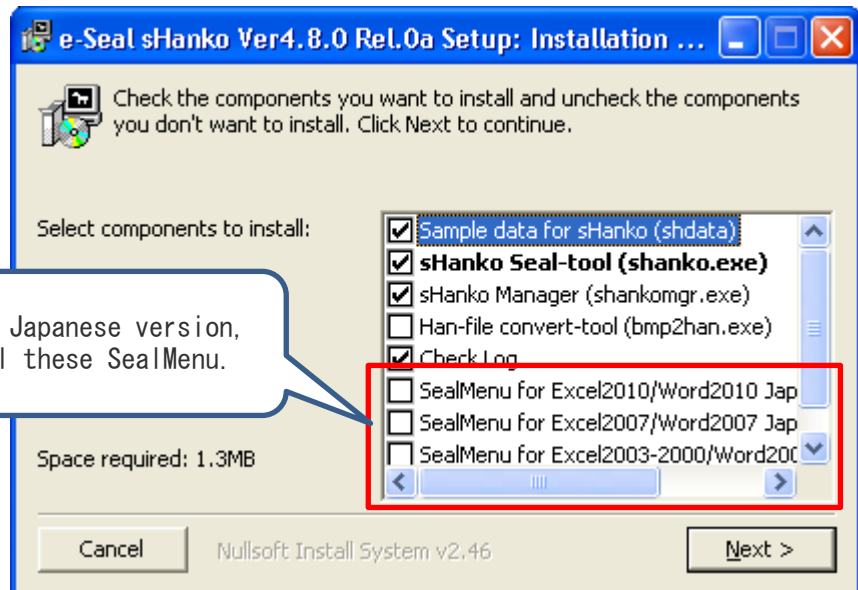


Step3)

Select module to install.

Click the button "Next >".

Since it is a Japanese version, don't install these SealMenu.



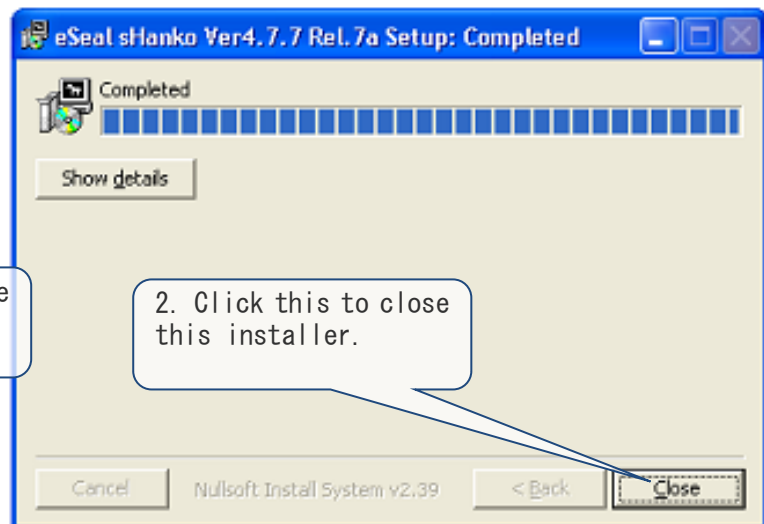
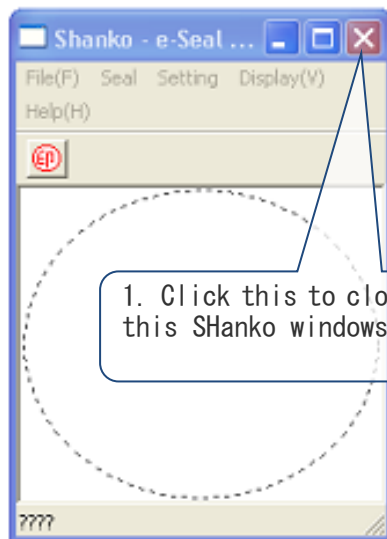
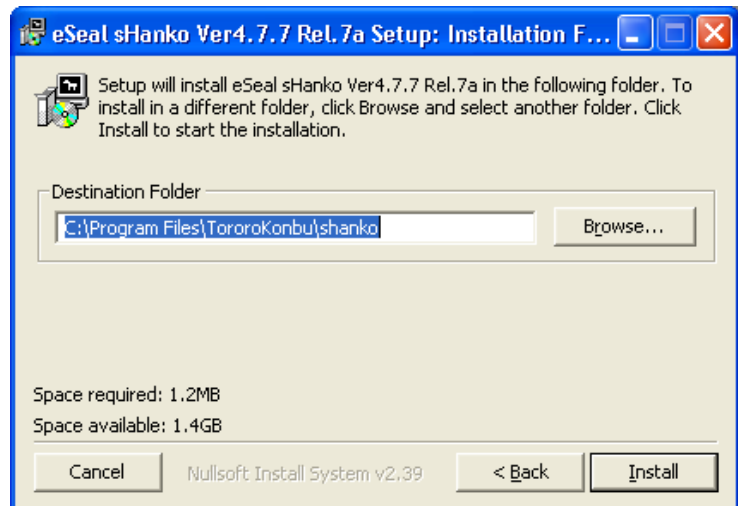
| | |
|---------------------------------|---|
| Sample data for SHanko (shdata) | Sample data. It will be installed in MyDocument Folder. |
| SHanko Seal-tool(shanko.exe) | Main module (Seal tool) shanko.exe. It will be installed in the install folder. |
| SHanko Manager(shankomgr.exe) | SHanko manager shankotmgr.exe. It will be installed in the install folder. |
| Check Log | Log check tool (checklog.exe). It will be installed in the install folder. |
| SealMenu for Excel/Wordr | Since it is a Japanese version, don't install these SealMenu. |

Step4)

Specify install folder.

Usually default is OK.

Click the button "Install".



A SHanko window will open. Please close it.

The installation finished if "Completed" is displayed.

Click the button "Close".

Check the Start Menu for eSeal SHanko.

The following case is Windows XP.



2-3. Install of Word and Excel addin Macro for e-Seal menu

Please download the sealing menu for Word and Excel from the following site, and install an English-language edition.

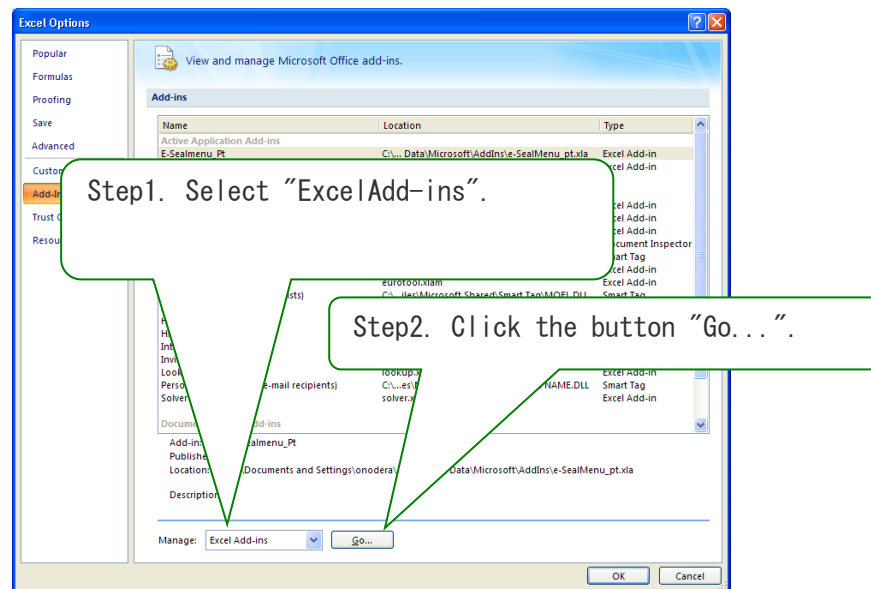
SealMenu for Word

http://www.tororokonbu.jp/hanko_wordmenubar.html

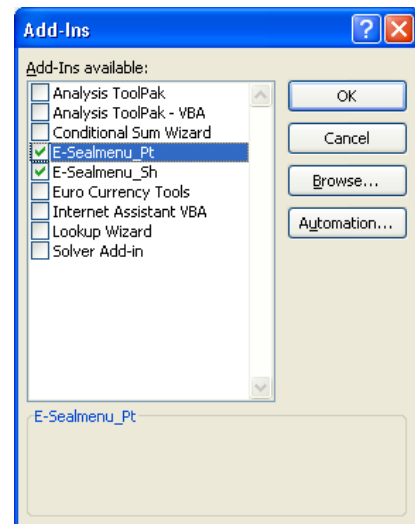
SealMenu for Excel 押印メニュー

http://www.tororokonbu.jp/hanko_excelmenubar.html

Excel Setting



Check Add-in "E-Sealmenu2010_Sh"
or "E-Sealmenu_Sh"



End

TororoKonbu System